

Portable Slit Lamp
LS-1



One-hand Operation

One-touch magnification switch is easy for doctors' inspection.



Big slit angle

Illumination angle max. up to be 60 degree, can get better slit view for cornea etc.



AA batteries are supported for long-term continuous operating time

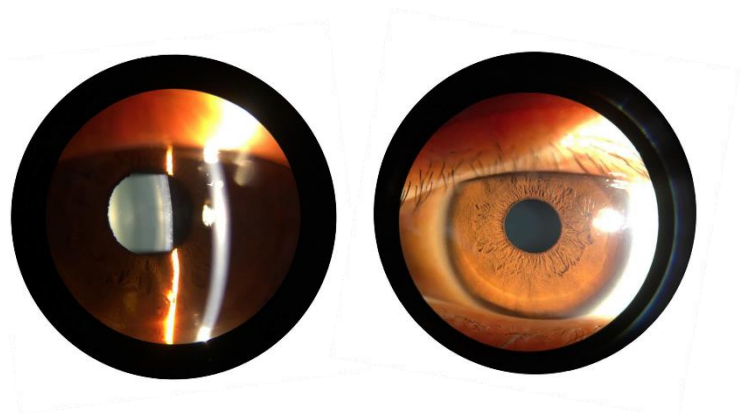
Both AA rechargeable and dry cell batteries are supported, and convenient to purchase everywhere. Batteries will provide more than 4 hours operating time after full charged.



Warm LED illumination and Max. 250 0oolux high intensity

Warm LED illumination with 3500k color temperature and long-time working time, creates a perfect observation circumstance and helps doctors relieve the visual fatigue at the same time.

 **High definition optical performance**



Portable Slit Lamp
LS-1



Specifications

Microscope	LS-1A	LS-1B
Type	Binocular Portable Slit Lamp	
Angle of Convergence:	13°	
Magnification:	10X	10 X
16x Working Distance:	80mm (16X) 100mm(10X)	
Pupil Adjustment Range:	49 - 75 mm	
Diopter Adjustment:	±7D	
Illumination		
Slit Width Slit	0.1mm, 0.2mm, 0.8mm & Ø1mm, Ø5mm, Ø12mm circle	
Length Slit	12mm(with width 0.1mm, 0.8mm), 8mm(with width 0.2mm)	
Angle Filter	±60°	
Light Resource	Neutral Density, Red-free, Cobalt Blue Warm LED, Color Temperature 3500k	
Illumination Control:	Continuously Variable from Low to Full Brightness (≥250 000 lux)	
Power (Battery)		
LED Working Voltage:	AA, 15VA	
Battery Type:	AA Dry Cell / Rechargeable Batteries	
Continuous Operating Time:	≥ 4 hours	
Dimensions and Weight		
Dimensions:	320*310*205 mm	
Net Weight:	Approx. 835g	

Standard Accessories

Carrying Case, Battery Charger, Forehead Support, Instrument Manual



Carleton Optical

Pattisson House, Addison Road, Chesham. Buckinghamshire HP5 2BD

Sales: 01494 775 811

Email: carleton@carletonltd.com