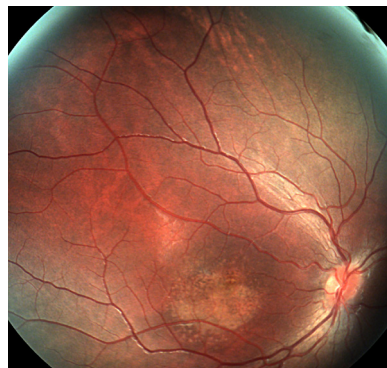
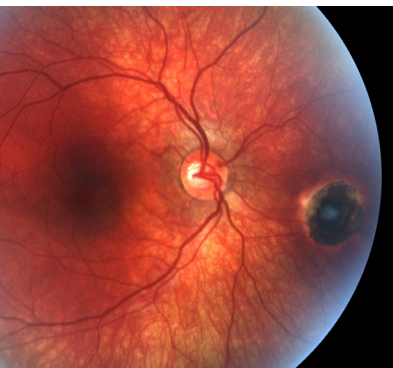


The future  
has arrived



**ICON**

---

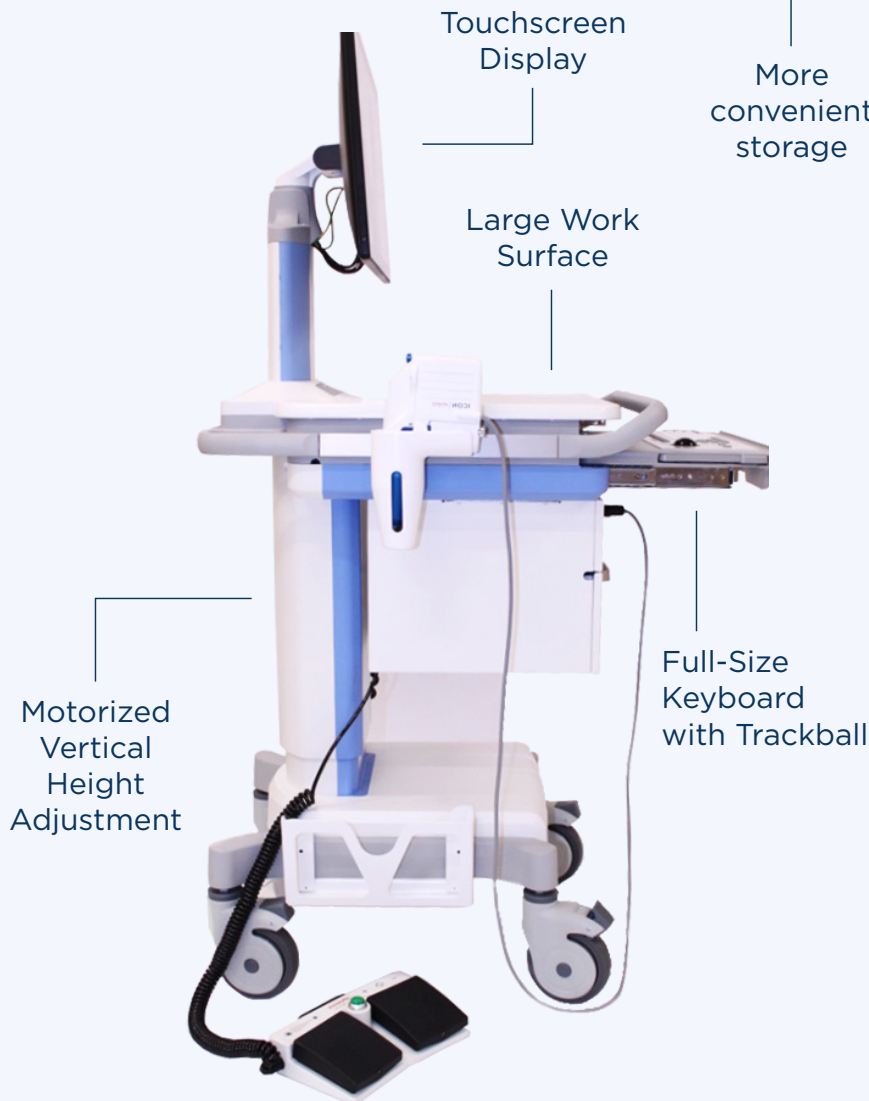
PEDIATRIC RETINAL CAMERA

# ICON

## PEDIATRIC RETINAL CAMERA

**ICON** is a hand-held wide field-of-view retinal camera optimized for pediatric patients to age eighteen. The design also targets high contrast imaging even with patients with darkly pigmented retinas. And, it provides very high resolution, even at wide-field, eliminating the need for multiple high-cost objective lenses.

**ICON** is light weight and connected to the cart by a USB cable. No bulky, heavy, or fragile fiber optic cable. The cart is light weight, move it with your fingers! This highly modernized design is in every way easy to use and provide images of paralleled quality.



- Wide field-of-view with real-time display
- White light and fluorescein angiography available
- Light-weight LED light source integrated into camera

The Phoenix Clinical ICON™ without fluorescein angiography is available under the FDA product code PJZ in the US and is exempt from pre-market review [510(k)].

The Phoenix Clinical ICON™ with fluorescein angiography has been CE marked and is currently available internationally in select regions.

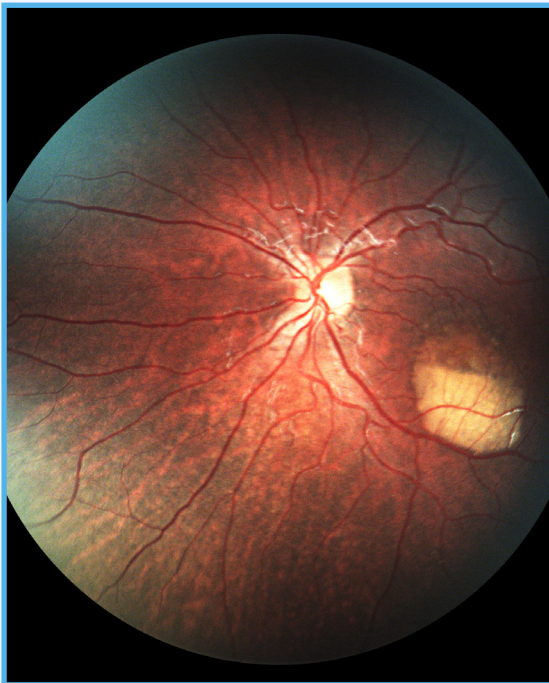


# ICON

PEDIATRIC RETINAL CAMERA

## Best Disease

Maculopathy

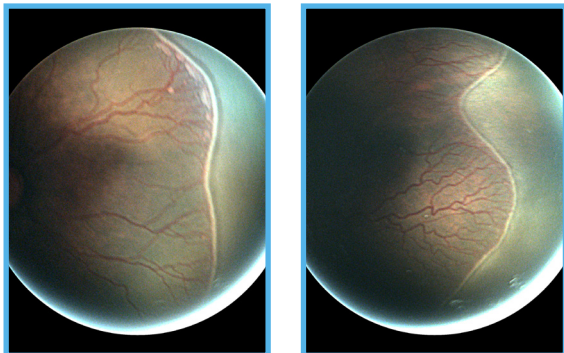


# ICON

PEDIATRIC RETINAL CAMERA

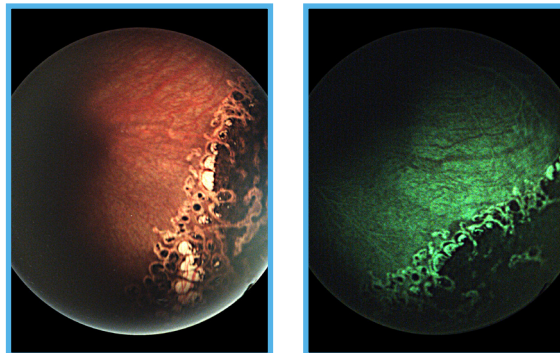
## ROP

African-American, with Popcorn Lesions



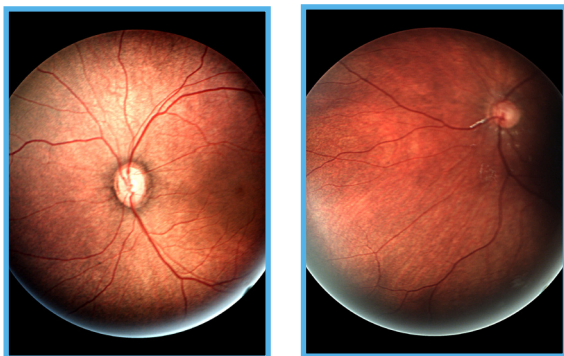
## FEVR

Peripheral Laser



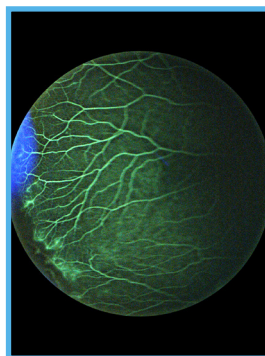
## Wide-field Image

Dark fundi



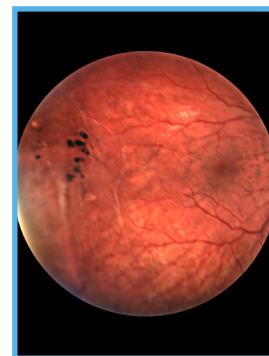
## FEVR

Stage 2B-FA



## Wide-field Image

18 year old patient



## Best Disease Montage



## Montage of Chorioretinal Scar



6630 Owens Drive, Pleasanton, CA 94588  
www.phoenix-clinical.com  
925.462.5000  
sales@phoenix-clinical.com

**phoenix**  
**CLINICAL**  
A PHOENIX TECHNOLOGY GROUP COMPANY